

GF6 - GF4 Passive Loudspeakers



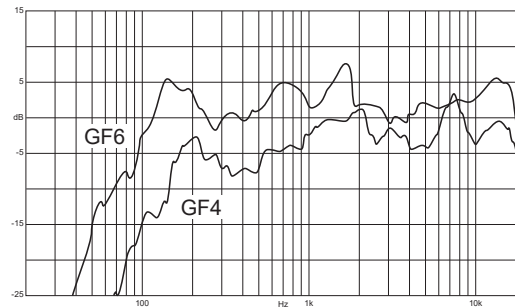
GF6W



GF4W

These full-range, passive two-way loudspeakers are designed to be installed on a shelf or with their own bracket directly on the wall.



The resilient ABS cabinet suits outdoor/indoor applications in permanent installations for music and speech in conference rooms, hotels, bars, restaurants and retail shops



Frequent Applications

Retail	Cafes, Bistros & Restaurants
Hotels & Resorts	Fitness & Wellness

Colors

GF6 / GF4	Black	
GF6W / GF4W	White	

GF6 / GF6W

6" Passive Speaker 40W @ 8Ω
10-20-30-40W @ 100V

General	
Type	Passive loudspeaker
Transducers	6" ferrite magnet woofer 1" tweeter
Frequency Response	90 Hz - 20 kHz (-10dB)
Max SPL ¹	114 dB (peak)
Power Handling	40 W @ 8 Ω 10-20-30-40W @ 100V
Nominal Impedance	selectable: 8 Ω / Hi-Z @ 70V, 100V
Coverage	V. 90° H. 90°

¹ Maximum SPL is calculated using a signal with crest factor 4 (12dB) measured at 1 m.

Suggested amplifiers

GA201	up to 4 pcs/ch @ 8Ω
GA43	@ 70V lines
GA46	@ 100V lines

Handling & Finishes

Dimensions (WxHxD)	220x320x220 mm (8.66x12.6x8.66 in)
Weight	3 kg (6.6 lb)
Material	ABS

GF4 / GF4W

4" Passive Speaker 20W @ 8Ω
2.5-5-10-20W @ 100V

General	
Type	Passive loudspeaker
Transducers	4" ferrite magnet woofer 1" tweeter
Frequency Response	110 Hz - 20 kHz (-10 dB)
Max SPL ¹	108 dB (peak)
Power Handling	20 W @ 8 Ω 2.5-5-10-20W @ 100V
Nominal Impedance	selectable: 8 Ω / Hi-Z @ 70V, 100V
Coverage	V. 90° H. 90°

¹ Maximum SPL is calculated using a signal with crest factor 4 (12dB) measured at 1 m.

Suggested amplifiers

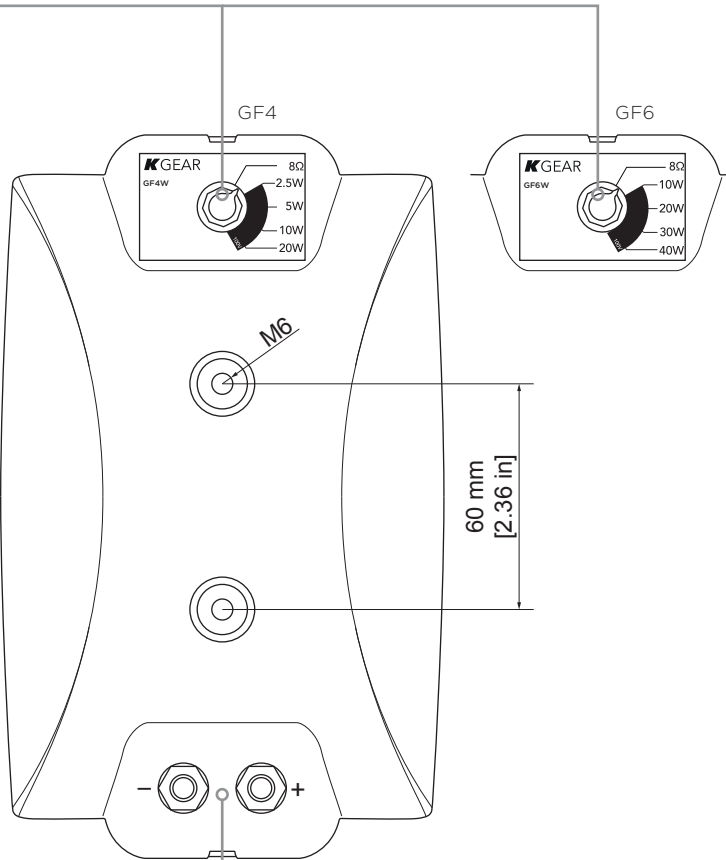
GA201	up to 4 pcs/ch @ 8Ω
GA43	@ 70V lines
GA46	@ 100V lines

Handling & Finishes

Dimensions (WxHxD)	150x244x150 mm (5.9x9.6x5.9 in)
Weight	1.8 kg (3.97 lb)
Material	ABS

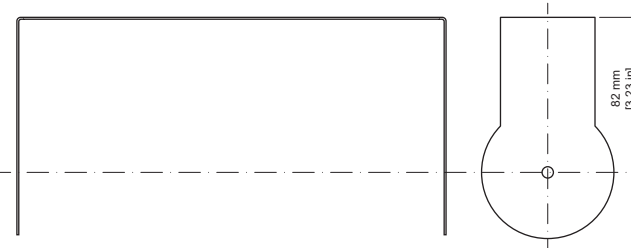
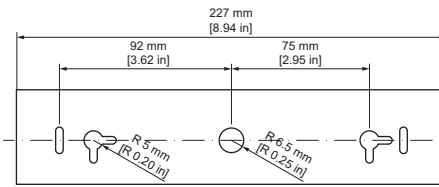
Impedance selector:

Set to 8Ω for low-impedance application.
OR
Set the power according to the required power consumption for 100V distributed loudspeaker lines.



Signal input:
+ RED : positive
- BLACK : negative

GF4 / GF4W bracket



GF6 / GF6W bracket

