



**KGEAR**  
Smart Audio Solutions

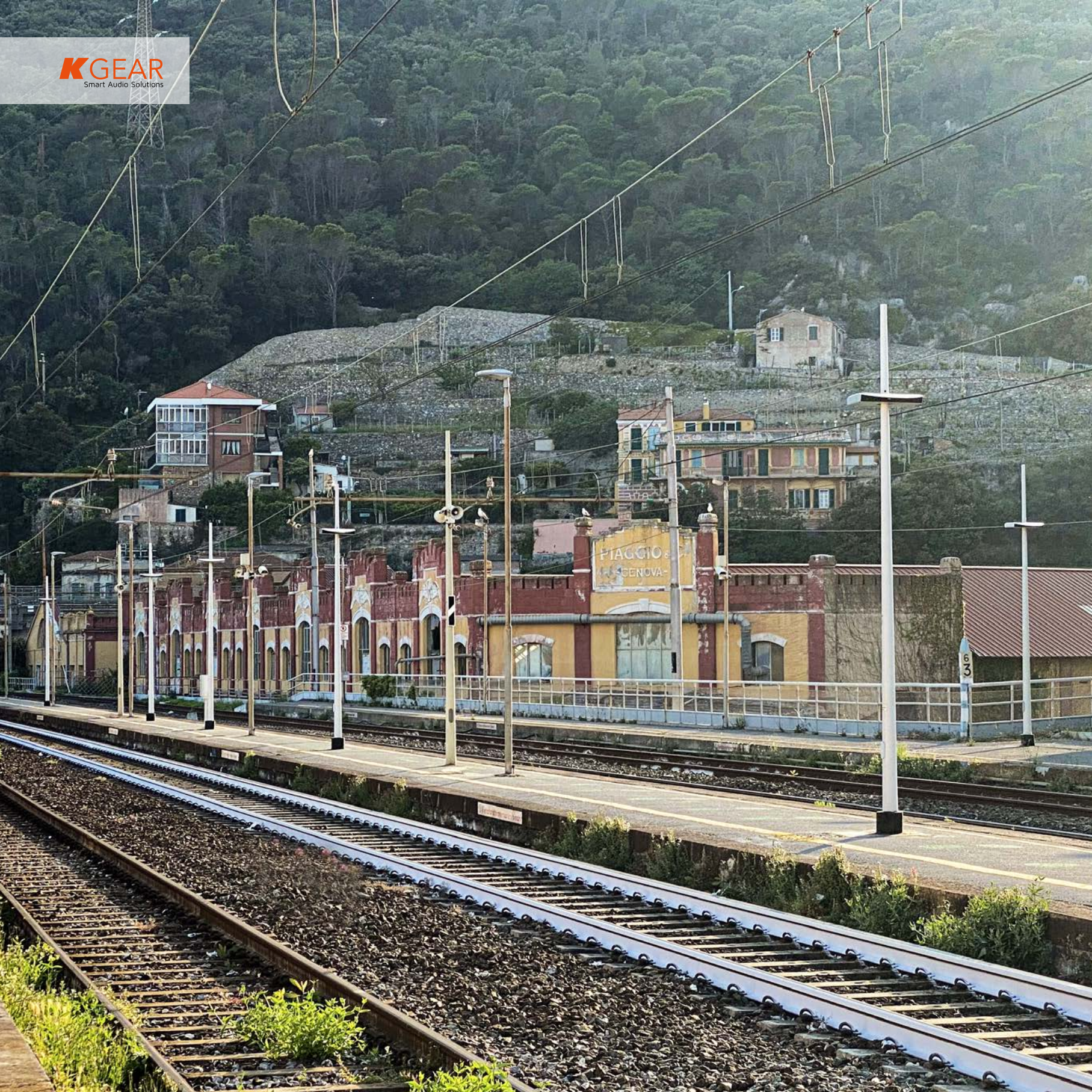
TRANSPORTATION FACILITIES | v.1 - 2023



TRANSPORTATION FACILITIES

<b>POLE</b>	<b>5</b>
<b>CEILING</b>	<b>9</b>
<b>WALL</b>	<b>11</b>
<b>ACTIVE</b>	<b>15</b>
<b>POINT SOURCE</b>	<b>16</b>
<b>SOUND PROJECTORS</b>	<b>17</b>
<b>RECESSED</b>	<b>18</b>







# POLE822TG

**PATENT  
PENDING**



Pole mount, bi-directional/dipole passive speaker with symmetrical dispersion, featuring two opposite horizontal 8 x 2" cone-driver "Pure Array Technology", with a selectable horizontal beam for maximum lateral sound attenuation. The speaker is housed in a sturdy protective aluminum round body that includes the mounting bracket, and a built-in transformer working at 100V with 60-30-15-7.5 W taps and symmetrical dispersion. In the vocal frequency range, the speaker assures a narrow horizontal coverage (10°) and wide vertical axis dispersion (120°) on both sides. IP66 rating. The paint color is grey for the body and black for the grill in front of the transducers.

## GENERAL

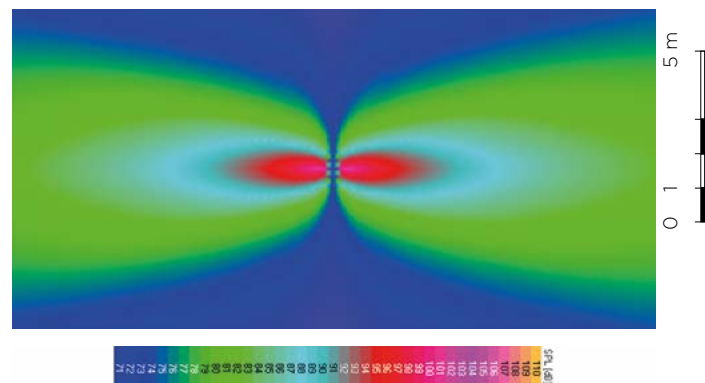
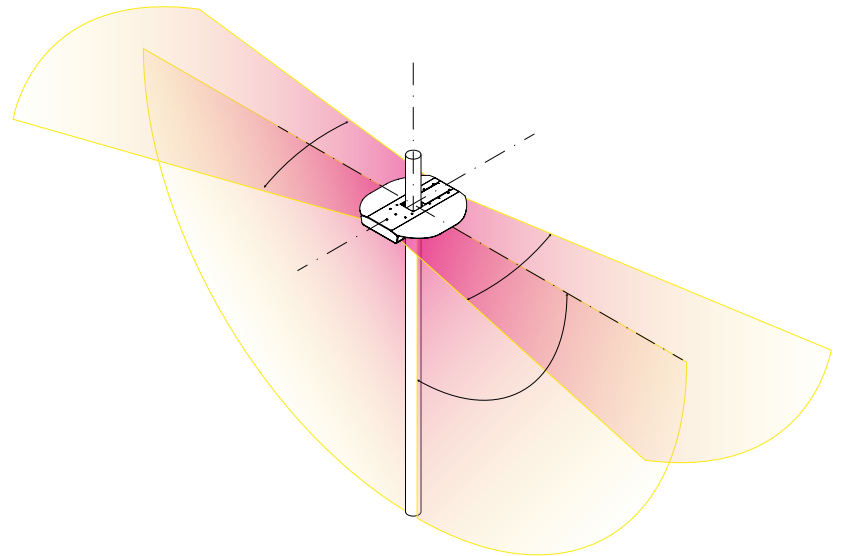
Type: Passive dipole Symmetrical loudspeaker  
 Transducer: (8+8)x 2" ferrite magnet woofers  
 (dipole line array emission)  
 Rated Power (100V line): 60W, 30W 15W, 7,5W Taps  
 Rated Power (70V line): 30W, 15W 7,5W, 3,75W Taps  
 Frequency Response (1): 160Hz – 20 kHz (-10dB)  
 Max SPL(2): 114 dB (peak) (quarter space)  
 Coverage: Dipole: V. 120° | H. 10° per side  
 Nominal Impedance: High (100V constant line compatible)

## PHYSICAL OVERVIEW

IP Rating: IP66  
 Dimensions (WxLxH): 638x621x83 mm (25.1x24.4x3.3 in)  
 Weight: 3,5 kg (7.7 lb)  
 Material: Stainless Steel/ABS  
 Color: Grey/Black

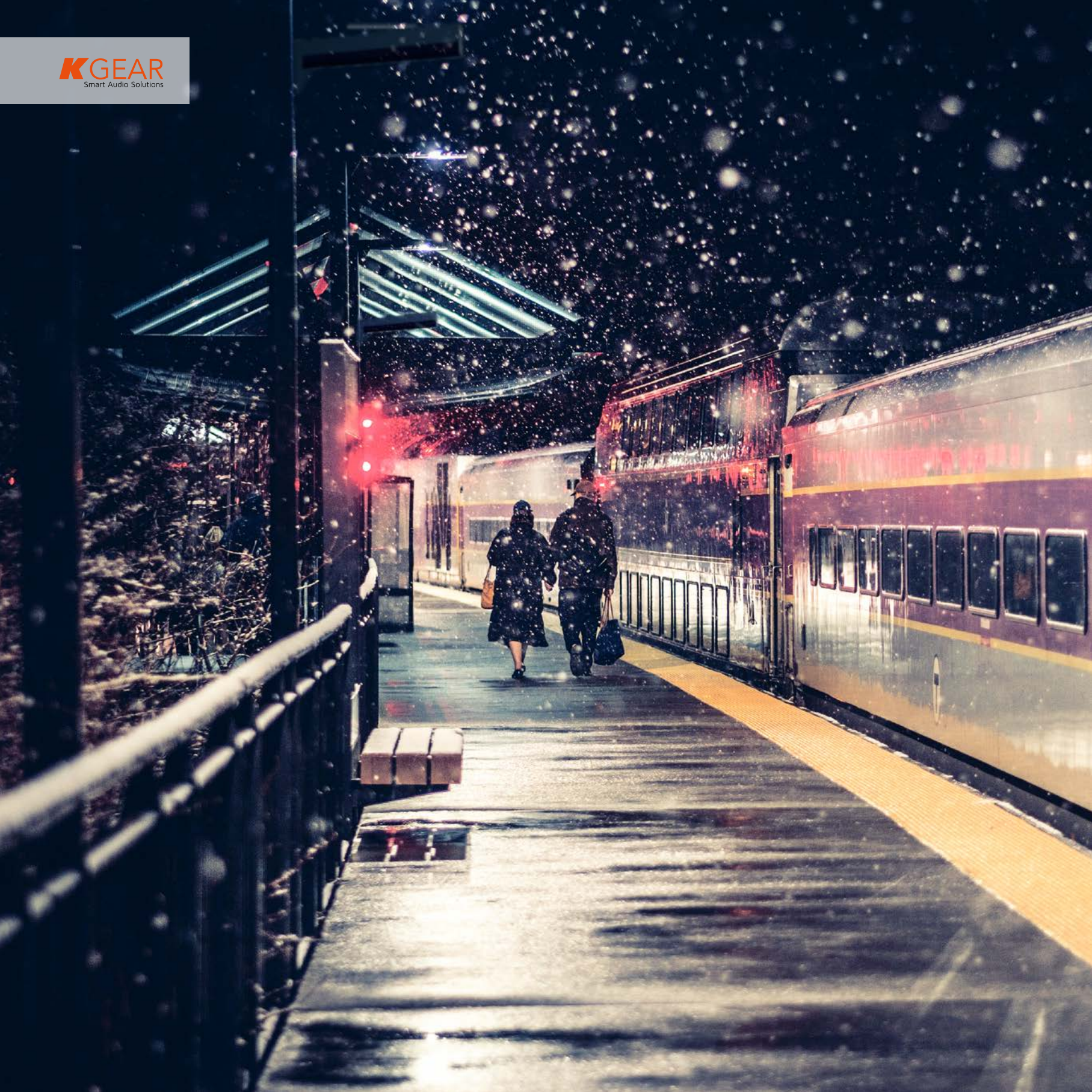
(1) - With dedicated preset

(2) - Maximum SPL is calculated using a signal with crest factor 4 (12dB) measured at 8 m then scaled at 1 m



**POLE**







## POLE820TB I POLE820TW I



Pole mount, down-firing passive speaker, featuring one horizontal 8 x 2" cone-driver "Pure Array Technology" with protective housing structure and mounting bracket. In the vocal frequency range, the speaker allows a 120° by 15° coverage. High pass filter at 160Hz. IP rating 66. Available in black or white.

### GENERAL

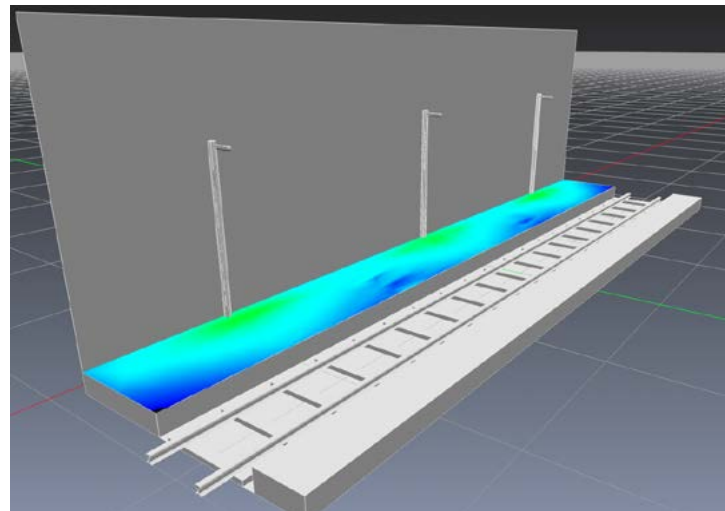
Type: Passive  
 Transducer: 8x2" ferrite magnet woofers  
 Rated Power (100V line): 32W, 16W, 8W, 4W Taps  
 Rated Power (70V line): 16W, 8W, 4W, 2W Taps  
 Frequency Response<sup>(1)</sup>: 160Hz - 20kHz (-10dB)  
 Max SPL<sup>(2)</sup>: 114 dB (peak)  
 Coverage: V. 120° | H. 15°  
 Nominal Impedance: High (100V constant line compatible)

### PHYSICAL OVERVIEW

IP Rating: IP66  
 Dimensions (WxLxH): 200x640x73 mm (7.87x25.19x2.87 in)  
 Weight: 5 kg (11.02 lb)  
 Material: ABS  
 Color: Black (POLE820TB) | White (POLE820TW)

(1) - With dedicated preset

(2) - Maximum SPL is calculated using a signal with crest factor 4 (12dB) measured at 8 m then scaled at 1 m



**POLE**





## CEIL42TB CEIL42TW



Ceiling passive speaker with quick mount ceiling bracket, featuring one “Pure Array Technology” of 4 x 2” cone drivers and a built-in 100 V transformer with 16-8-4-2 W power taps. In the vocal frequency range, the speaker assures coverage of 120° x 25°. IP rating 65. Available in black or white.

### GENERAL

Type: Passive  
 Transducer: 4x2” ferrite magnet woofers  
 Rated Power (100V line): 16W, 8W, 4W, 2W Taps  
 Rated Power (70V line): 8W, 4W, 2W, 1W Taps  
 Frequency Response<sup>(1)</sup>: 160Hz - 20kHz (-10dB)  
 Max SPL<sup>(2)</sup>: 107 dB (peak)  
 Coverage: 120° | 25°  
 Nominal Impedance: High (100V constant line compatible)

### PHYSICAL OVERVIEW

IP Rating: IP65  
 Dimensions (WxLxH): 60x340x100 mm (2.36x13.38x3.93 in)  
 Weight: 1,8 kg (3.97 lb)  
 Material: ABS  
 Color: Black (CEIL42TB) | White (CEIL42TW)

(1) - With dedicated preset

(2) - Maximum SPL is calculated using a signal with crest factor 4 (12dB) measured at 8 m then scaled at 1 m

## CEIL82TB CEIL82TW



Ceiling passive speaker with quick mount ceiling bracket, featuring one “Pure Array Technology” of 8x 2” cone drivers and a built-in 100 V transformer with 32-16-8-4 W power taps. In the vocal frequency range, the speaker assures coverage of 120° x 15°. IP rating 65. Available in black or white.

### GENERAL

Type: Passive  
 Transducer: 8x2” ferrite magnet woofers  
 Rated Power (100V line): 32W, 16W, 8W, 4W Taps  
 Rated Power (70V line): 16W, 8W, 4W, 2W Taps  
 Frequency Response<sup>(1)</sup>: 160Hz - 20kHz (-10dB)  
 Max SPL<sup>(2)</sup>: 114 dB (peak)  
 Coverage: 120° | 15°  
 Nominal Impedance: High (100V constant line compatible)

### PHYSICAL OVERVIEW

IP Rating: IP65  
 Dimensions (WxLxH): 60x602x100 mm (2.36x23.70x3.93 in)  
 Weight: 2,8 kg (6.17 lb)  
 Material: ABS  
 Color: Black (CEIL82TB) | White (CEIL82TW)

(1) - With dedicated preset

(2) - Maximum SPL is calculated using a signal with crest factor 4 (12dB) measured at 8 m then scaled at 1 m



## WALL42TB WALL42TW



Passive speaker for either wall or ceiling mount including two L brackets, featuring one “Pure Array Technology” of 4 x 2” cone drivers and a built-in 100 V transformer with 16-8-4-2 W power taps. In the vocal frequency range, the speaker assures coverage of 120° x 25°. IP rating 65. Available in black or white.

### GENERAL

Type: Passive  
Transducer: 4x2” ferrite magnet woofers  
Rated Power (100V line): 16W, 8W, 4W, 2W Taps  
Rated Power (70V line): 8W, 4W, 2W, 1W Taps  
Frequency Response<sup>(1)</sup>: 160Hz – 20kHz (-10dB)  
Max SPL<sup>(2)</sup>: 107dB (peak)  
Coverage: H. 120° | V. 25°  
Nominal Impedance: High (100V constant line compatible)

### PHYSICAL OVERVIEW

IP Rating: IP65  
Dimensions (WxLxH): 60x340x95 (120) mm (2.36x13.38x3.74 (4.72) in)  
Weight: 1,4 kg (3.09 lb)  
Material: ABS  
Color: Black (WALL42TB) | White (WALL42TW)

(1) - With dedicated preset

(2) - Maximum SPL is calculated using a signal with crest factor 4 (12dB) measured at 8 m then scaled at 1 m



## WALL82TB WALL82TW



Passive speaker for either wall or ceiling mount including two L brackets, featuring one “Pure Array Technology” of 8 x 2” cone drivers and a built-in 100 V transformer with 32-16-8-4 W power taps. In the vocal frequency range, the speaker assures coverage of 120° x 15°. IP rating 65. Available in black or white.

### GENERAL

Type: Passive  
 Transducer: 8x2” ferrite magnet woofers  
 Rated Power (100V line): 32W, 16W, 8W, 4W Taps  
 Rated Power (70V line): 16W, 8W, 4W, 2W Taps  
 Frequency Response<sup>(1)</sup>: 160Hz - 20kHz (-10dB)  
 Max SPL<sup>(2)</sup>: 114dB (peak)  
 Coverage: H. 120° | V. 15°  
 Nominal Impedance: High (100V constant line compatible)

### PHYSICAL OVERVIEW

IP Rating: IP65  
 Dimensions (WxLxH): 60x604x95 (120) mm (2.36x23.77x3.74 (4.72) in)  
 Weight: 2,2 kg (4.85 lb)  
 Material: ABS  
 Color: Black (WALL82TB) | White (WALL82TW)

(1) - With dedicated preset

(2) - Maximum SPL is calculated using a signal with crest factor 4 (12dB) measured at 8 m then scaled at 1 m

## WALL162TB WALL162TW



Passive speaker for either wall or ceiling mount including two L brackets, featuring one “Pure Array Technology” of 16x 2” cone drivers and a built-in 100 V transformer with 64-32-16-8 W power taps. In the vocal frequency range, the speaker assures coverage of 120° x 7°. IP rating 65. Available in black or white.

### GENERAL

Type: Passive  
 Transducer: 8x2” ferrite magnet woofers  
 Rated Power (100V line): 64W, 32W, 16W, 8W Taps  
 Rated Power (70V line): 32W, 16W, 8W, 4W Taps  
 Frequency Response<sup>(1)</sup>: 160Hz - 20kHz (-10dB)  
 Max SPL<sup>(2)</sup>: 117dB (peak)  
 Coverage: H. 120° | V. 7°  
 Nominal Impedance: High (100V constant line compatible)

### PHYSICAL OVERVIEW

IP Rating: IP65  
 Dimensions (WxLxH): 60x1200x95 (180) mm (2.36x47.24x3.74(4.72) in)  
 Weight: 4,2 kg (9.26 lb)  
 Material: ABS  
 Color: Black (WALL162TB) | White (WALL162TW)

(1) - With dedicated preset

(2) - Maximum SPL is calculated using a signal with crest factor 4 (12dB) measured at 8 m then scaled at 1 m





276

## WALL822TB WALL822TW

PATENT  
PENDING



Wall mount bi-directional / dipole passive speaker with asymmetrical dispersion, featuring two unmovable-tilt horizontal 8 x 2" cone-driver "Pure Array Technology", included wall bracket, a selectable horizontal beam for maximum lateral sound attenuation and an onboard transformer working at 100V with 60-30-15-7.5 W power taps. In the vocal frequency range, the speaker assures a wide horizontal coverage (120°) and wide vertical axis dispersion (10°) on both sides. IP rating 65. Available in black or white.

### GENERAL

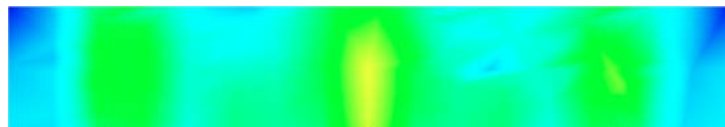
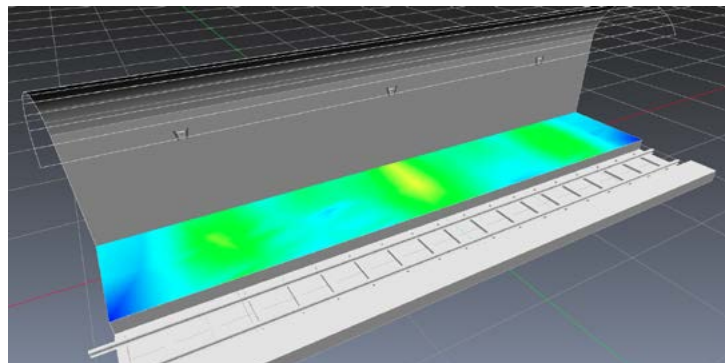
Type: Passive dipole Asymmetrical loudspeaker  
 Transducer: (8+8)x 2" ferrite magnet woofers  
 (dipole line array emission)  
 Rated Power (100 V line): 60W, 30W 15W, 7,5W Taps  
 Rated Power (70 V line): 30W 15W, 7,5W, 3,75 Taps  
 Frequency Response<sup>(1)</sup>: 160Hz - 20kHz (-10dB)  
 Max SPL<sup>(2)</sup>: 114dB (peak)  
 Coverage: Dipole: V. 120° | H. 10° per side  
 Nominal Impedance: High (100V constant line compatible)

### PHYSICAL OVERVIEW

IP Rating: IP65  
 Dimensions (WxLxH): 638x621x83 mm (25.1x24.4x3.3 in)  
 Weight: 7,00 kg (15.43 lb)  
 Material: Stainless Steel / ABS  
 Color: Black/White

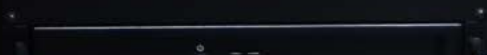
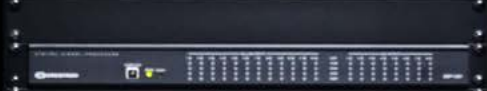
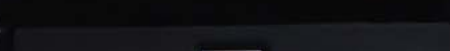
(1) - With dedicated preset

(2) - Maximum SPL is calculated using a signal with crest factor 4 (12dB) measured at 8 m then scaled at 1 m



**WALL**





## ACT42B ACT42W



Active speaker for either wall or ceiling mount including two L brackets, featuring “Pure Array Technology” of 4 x 2” cone drivers and a built-in 25 W power amplifier. In the vocal frequency range the speaker assures a coverage of 120° x 25°. Available in black or white.

### GENERAL

Type: Active  
 Power handling: 25 Watt  
 Transducer: 4 x 2” ferrite magnet woofers  
 Frequency Response <sup>(1)</sup>: 160 Hz - 20 kHz (-10 dB)  
 Max SPL<sup>(2)</sup>: 108 dB (peak)  
 Coverage: 120° | 25°

### PHYSICAL OVERVIEW

Power: external 24V  
 Dimensions (WxLxH): 60x340x100 mm (2.36x13.38x3.93 in)  
 Weight: 1,9 kg (4.2 lb)  
 Material: ABS  
 Color: Black (ACT42B) | White (ACT42W)

(1) - With dedicated preset

(2) - Maximum SPL is calculated using a signal with crest factor 4 (12dB) measured at 8 m then scaled at 1 m



## POINT4B POINT4W



4" full-range, two-way, wall mount, point source speaker, with front protection grille, featuring built-in 100V transformer with 20-10 W power taps. Wall bracket included. Coverage angle 90°. Available in black or white.

### GENERAL

Rated Power: 20W - Nominal Impedance: Low 8 ohm  
Peak power: 40W - Nominal Impedance: Low 8 ohm  
Rated Power (100V): 10W, 20W, 30W, 40W  
Rated Power (70V): 5W, 10W, 15W, 20W  
Impedance: 8ff/70-100V with impedance selector switch  
Frequency Range<sup>(1)</sup>: 110Hz - 20KHz (-6dB average)  
Maximum SPL<sup>(2)</sup>: 108dB (peak)  
Continuos SPL: 96db  
Coverage: V.90° - H.90°

### TRANSDUCERS

4" subwoofer ferrite magnet + 1" tweeter

### AUDIO I/O

Black and red screw terminals

### PHYSICAL OVERVIEW

Width: 150 mm (5,90 in)  
Height: 244 mm (9,61 in)  
Depth: 150 mm (5,90 in)  
Weight: 1,8 kg (3,97 lbs)  
Material: ABS

(1) - With dedicated preset

(2) - Maximum SPL is calculated using a signal with crest factor 4 (12dB) measured at 8 m then scaled at 1 m

## POINT6B POINT6W



6" full-range, two-way, wall mount, point source speaker, with front protection grille, featuring built-in 100V transformer with 20-10 W power taps. Wall bracket included. Coverage angle 90°. Available in black or white.

### GENERAL

Rated Power: 40W - Nominal Impedance: Low 8 ohm  
Peak power: 80W - Nominal Impedance: Low 8 ohm  
Rated Power (100V): 10W, 20W, 30W, 40W  
Rated Power (70V): 5W, 10W, 15W, 20W  
Impedance: 8ff/70-100V with impedance selector switch  
Frequency Range<sup>(1)</sup>: 90Hz - 20KHz (-6dB average)  
Maximum SPL<sup>(2)</sup>: 114dB (peak)  
Continuos SPL: 102db  
Coverage: V.90° - H.90°

### TRANSDUCERS

6" subwoofer ferrite magnet + 1" tweeter

### AUDIO I/O

Black and red screw terminals

### PHYSICAL OVERVIEW

Width: 220 mm (8,66 in)  
Height: 320 mm (12,60 in)  
Depth: 220 mm (8,66 in)  
Weight: 3 kg (6,61 lbs)  
Material: ABS

(1) - With dedicated preset

(2) - Maximum SPL is calculated using a signal with crest factor 4 (12dB) measured at 8 m then scaled at 1 m

## SPROJ5TW

One-way, sound projector in ABS, featuring onboard transformer working at 100V with 10-5-2,5 W power taps. Water resistant 5" woofer. Waterproof cable gland. Aluminum grille. Stainless steel bracket. IP rating 55. Available in white.



### GENERAL

Type: Passive  
 Transducer: 5" ferrite magnet woofers  
 Rated Power (100 V line): 10W, 5W, 2.5W Taps  
 Rated Power (70 V line): 5W, 2.5W, 1.25W Taps  
 Frequency Response<sup>(1)</sup>: 130 Hz - 17 kHz (-10 dB)  
 Max SPL<sup>(2)</sup>: 104dB (peak)  
 Coverage: 130° conical

### PHYSICAL OVERVIEW

IP Rating: IP55  
 Dimensions (WxLxH): 138x138x200 mm (5.43x5.43x7.87 in)  
 Weight: 1,8 kg (3.97 lb)  
 Material: ABS  
 Color: White (SPROJ5TW)

(1) - With dedicated preset

(2) - Maximum SPL is calculated using a signal with crest factor 4 (12dB) measured at 8 m then scaled at 1 m

## SPROJ52TW bi-directional

Two-way sound projector in aluminum, featuring built-in 100V transformer with 10-5-2,5 W power taps. 2x water resistant 5" woofers. Waterproof cable gland. Aluminum grille. Stainless steel bracket. IP rating 55. Available in white.



### GENERAL

Type: Passive  
 Transducer: 2x5" ferrite magnet woofers  
 Rated Power (100 V line): 10, 5, 2.5 W Taps  
 Rated Power (70 V line): 5W, 2.5W, 1.25W Taps  
 Frequency Response<sup>(1)</sup>: 130 Hz - 17 kHz (-10 dB)  
 Max SPL<sup>(2)</sup>: 104dB (peak)  
 Coverage: 130° conical

### PHYSICAL OVERVIEW

IP Rating: IP55  
 Dimensions (WxLxH): 136x136x210 mm (5.35x5.35x8.26 in)  
 Weight: 1,8 kg (3.97 lb)  
 Material: Aluminum  
 Color: White (SPROJ52TW)

(1) - With dedicated preset

(2) - Maximum SPL is calculated using a signal with crest factor 4 (12dB) measured at 8 m then scaled at 1 m



## REC3CB-T REC3CW-T



Round speaker for either in-wall or in-ceiling mount, consisting of a 3" coaxial cone and an external 100 V transformer box with 16-8-4-2 W power taps. 130° wide coverage. ABS chassis and stainless steel round protection grille painted in white or black.

### GENERAL

Type: Passive  
 Transducer: 3" ferrite magnet woofers  
 Rated Power (100 V line): 16W, 8W, 4W , 2W Taps (External transformer)  
 Rated Power (70 V line): 8W, 4W, 2W, 1W Taps (External transformer)  
 Frequency Response <sup>(1)</sup>: 130 Hz – 20 kHz (-10 dB)  
 Max SPL <sup>(2)</sup>: 104dB (peak)  
 Coverage: V. 130° conical

### PHYSICAL OVERVIEW

Dimensions: Ø outer 116 mm (4.57 in) | Ø inner: 100 mm (4 in)  
 Weight: 0.4 kg (0.88 lb)  
 Material: ABS  
 Color: Black (REC3CB-T) | White (REC3CW-T)

(1) - With dedicated preset

(2) - Maximum SPL is calculated using a signal with crest factor 4 (12dB) measured at 8 m then scaled at 1 m

## REC3WB-T REC3WW-T



Square speaker for either in-wall or in-ceiling mount, consisting of a 3" coaxial cone and an external 100 V transformer box with 16-8-4-2 W power taps. 130° wide coverage. ABS chassis and stainless steel square protection grille painted in white or black.

### GENERAL

Type: Passive  
 Transducer: 3" ferrite magnet woofers  
 Rated Power (100 V line): 16W, 8W, 4W , 2W Taps (External transformer)  
 Rated Power (70 V line): 8W, 4W, 2W, 1W Taps (External transformer)  
 Frequency Response <sup>(1)</sup>: 130 Hz – 20 kHz (-10 dB)  
 Max SPL <sup>(2)</sup>: 104dB (peak)  
 Coverage: V. 130° conical

### PHYSICAL OVERVIEW

Dimensions: Ø outer 116 mm (4.57 in) | Ø inner: 100 mm (4 in)  
 Weight: 0.4 kg (0.88 lb)  
 Material: ABS  
 Color: Black (REC3WCB-T) | White (REC3WW-T)

(1) - With dedicated preset

(2) - Maximum SPL is calculated using a signal with crest factor 4 (12dB) measured at 8 m then scaled at 1 m

## REC5TCB REC5TCW



Round speaker for either in-wall or in-ceiling mount, 5,25" coaxial driver 0.75" titanium dome tweeter tilting and built-in 100 V transformer with 16-8-4-2 W power taps. 120° wide coverage. ABS chassis and stainless steel round protection grille painted in white or black.

### GENERAL

Type: Passive  
 Transducer: 5,25" coax ferrite magnet woofer  
 0.75" titanium dome tweeter tilting  
 Frequency range <sup>(1)</sup>: 70 Hz - 20 kHz (±3dB)  
 60 Hz - 20 KHz (±10dB)  
 Power handling: 40 W | 80 W Peak Nominal impedance: 8 ohm  
 Rated Power (100 V line): 16W, 8W, 4W , 2W Taps  
 Rated Power (70 V line): 8W, 4W, 2W, 1W Taps  
 Max SPL <sup>(2)</sup>: 106dB (peak)  
 Coverage: V. 120° conical

### PHYSICAL OVERVIEW

Dimension: Ø outer: 196 mm (7.7 in) | Ø inner: 179 mm (7 in)  
 Depth: 75 mm (3 in)  
 Weight: 1.08 kg (2.4 lb)  
 Material: ABS  
 Color: Black (REC5TCB) | White (REC5TCW)

(1) - With dedicated preset

(2) - Maximum SPL is calculated using a signal with crest factor 4 (12dB) measured at 8 m then scaled at 1 m

## REC5TWB REC5TWW



Square speaker for either in-wall or in-ceiling mount, 5,25" coaxial driver 0.75" titanium dome tweeter tilting and built-in 100 V transformer with 16-8-4-2 W power taps. 120° wide coverage. ABS chassis and stainless steel round protection grille painted in white or black.

### GENERAL

Type: Passive  
 Transducer: 5,25" coax ferrite magnet woofer  
 0.75" titanium dome tweeter tilting  
 Frequency range <sup>(1)</sup>: 70 Hz - 20 kHz (±3dB)  
 60 Hz - 20 KHz (±10dB)  
 Power handling: 40 W | 80 W Peak Nominal impedance: 8 ohm  
 Rated Power (100 V line): 16W, 8W, 4W , 2W Taps  
 Rated Power (70 V line): 8W, 4W, 2W, 1W Taps  
 Max SPL <sup>(2)</sup>: 106dB (peak)  
 Coverage: V. 120° conical

### PHYSICAL OVERVIEW

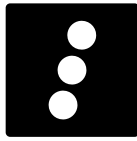
Dimension: Ø outer: 196 mm (7.7 in) | Ø inner: 179 mm (7 in)  
 Depth: 75 mm (3 in)  
 Weight: 1.08 kg (2.4 lb)  
 Material: ABS  
 Color: Black (REC5TWB) | White (REC5TWW)

(1) - With dedicated preset

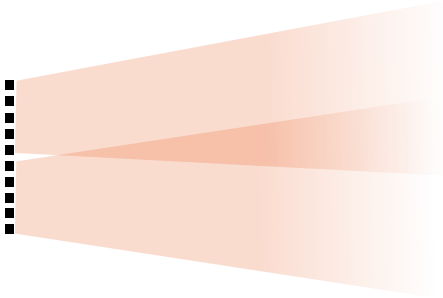
(2) - Maximum SPL is calculated using a signal with crest factor 4 (12dB) measured at 8 m then scaled at 1 m

# RECESSED





Pure  
Array  
Technology



### Pure Array Technology

Composed of closely-spaced, full-range sound sources, all our line array elements feature our innovative Pure Array Technology (PAT). With no drivers dedicated to the high frequencies, no bass reflex or passive radiators dedicated to the low end, there are no crossover points and a perfect phase response is achieved in both the near and far fields. All the sound sources in the array are identical and perfectly coupled producing a true line array with benefit of having the sound beam radiated by the column very wide on the horizontal plane and very narrow on the vertical plane.

The amount of energy sent towards the ceiling and the floor is then minimized greatly improving the intelligibility in highly reverberant venues like houses of worship and conference rooms.

Furthermore, such a focused sound beam is able to cover a long distance uniformly. The audience located in front of the array and at the back of the venue will experience the same tonal balance without the need of several delay lines. With no horns and no waveguides, PAT columns can be joined to create longer arrays. The longer the array, the narrower the sound beam and the further the distance that can be covered uniformly.

### Visually Discreet

For architectural reasons, a visually discreet audio system may be required to integrate seamlessly with the layout without compromising sound quality.

### Weather Resistant

We utilize the most durable and resistant materials when developing our products to protect and conserve the system regardless of the elements, rendering a KGEAR installation reliable and long-lasting.

### Lightweight

We created a portfolio complete with lightweight products that are easy to transportation and quick to setup optimizing logistics, space, labor costs and time.





**KGEAR**  
Smart Audio Solutions

[www.kgear.it](http://www.kgear.it)

